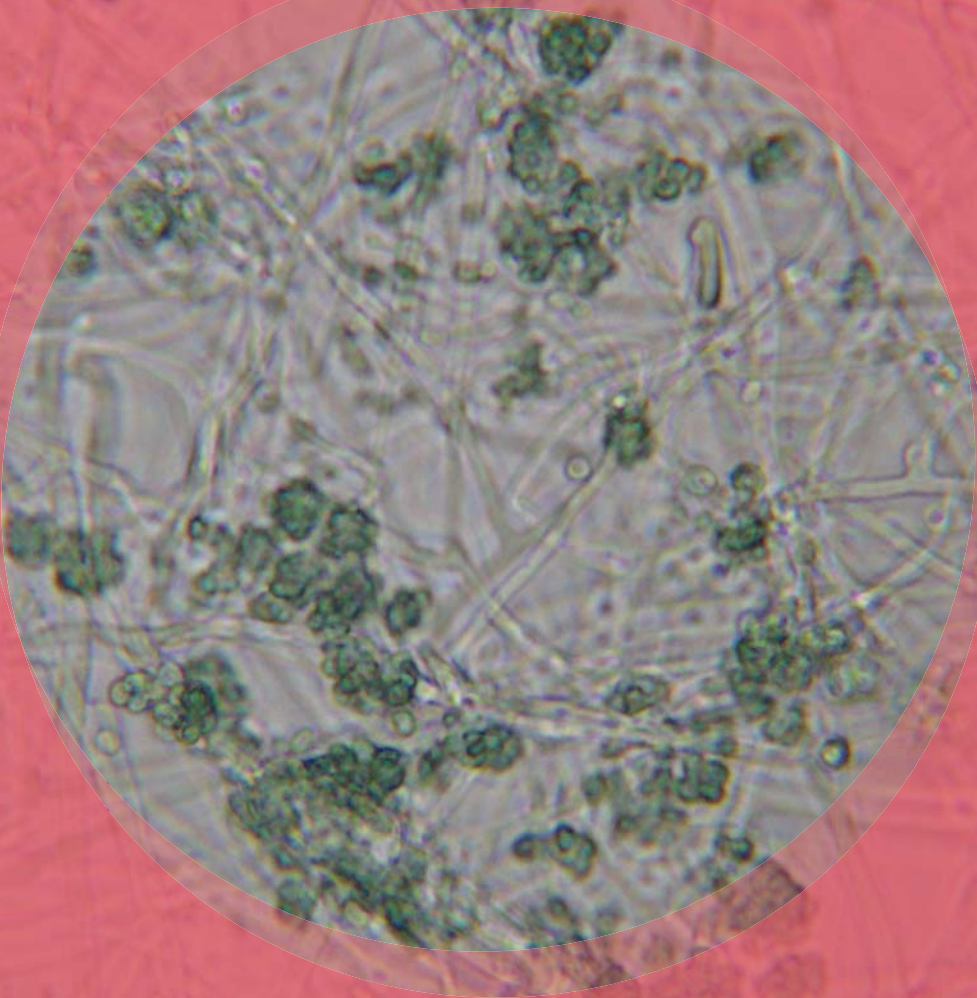


Trichoderma



Natural Habitats *Decaying wood • Dead leaves • Soil*

Suitable Substrates in the Indoor Environment

Paper • Textiles • Wood (wet)

Mode of Dissemination *Insects • Water splash • Wind*

Allergenic Potential *Type I allergies (hay fever, asthma)*

• *Type III (hypersensitivity)*

Potential Opportunist or Pathogen *Has occasionally been associated with disease in immunocompromised individuals*

Industrial Uses *Biocontrol agent against a variety of plant pathogens*

• *Byproducts of T. viride are used to make beer and wine*

Potential Toxins Produced *Gliotoxin • Isocyanides • Trichothecene*

• *Trichodermin • T-2 toxin*

LAB SERVICES: Asbestos, Mold, Bacteria, Industrial Hygiene, Metals, Allergens, PCR-Polymerase Chain Reaction (DNA), Silica, Volatiles Scan, Formaldehyde by HPLC, Water and Materials Testing.



www.latestesting.com

159 PASADENA AVE, SOUTH PASADENA, CA 91030 TEL: 800.303.0047