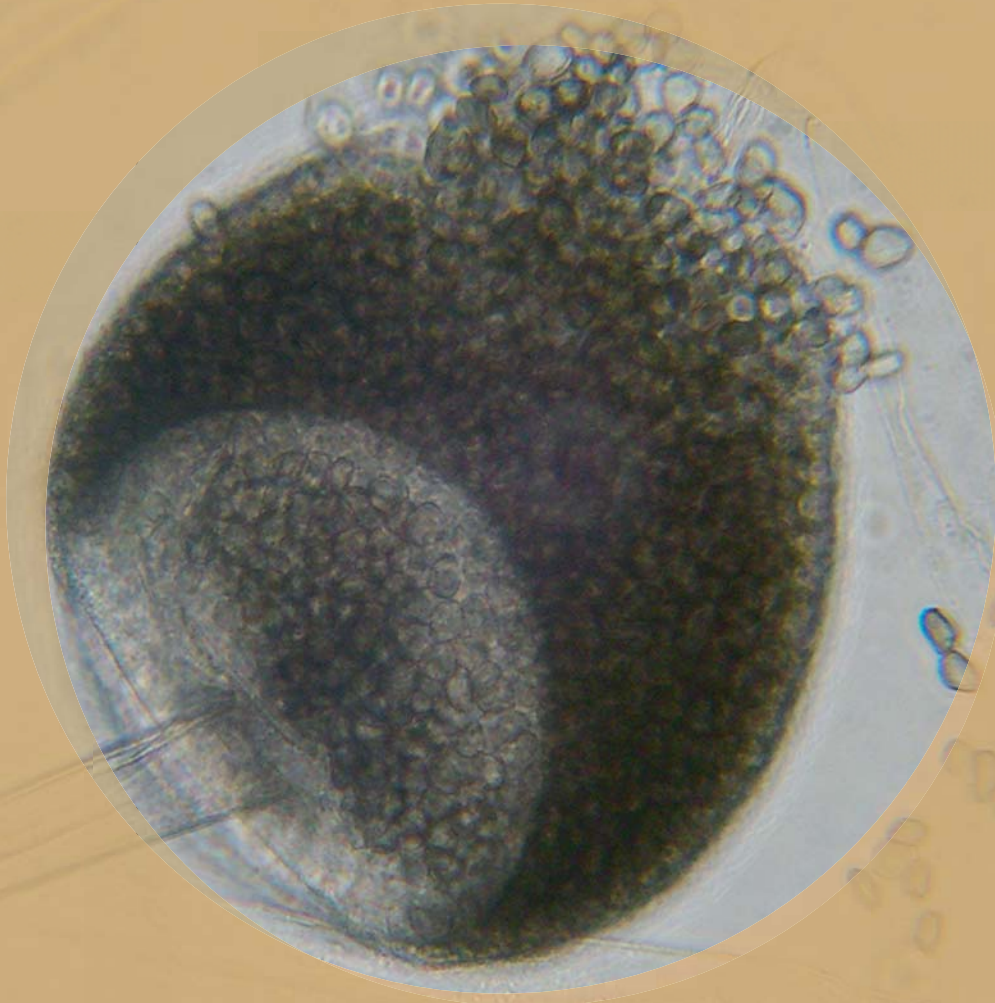


# Rhizopus



**Natural Habitats** *Dung • Fruits- causing rhizopus rot on stone fruits and strawberries • Soils • Vegetables*

**Suitable Substrates in the Indoor Environment**  
*Stored fruits and vegetables*

**Water Activity** *Aw=0.93*

**Mode of Dissemination** *Wind*

**Allergenic Potential** *Type I (hay fever, asthma) • Type III (hypersensitivity)*

**Potential Opportunist or Pathogen** *Causal agent of zygomycosis in immunocompromised, malnourished or severely burned people*

**Industrial Uses** *Used to ferment rice into miso • Used to ferment soybeans to tempeh and sufu*

**Potential Toxins Produced** *Rhizopus oryzae produces agroclavine (an ergot alkaloid toxic to mammals)*

**LAB SERVICES:** Asbestos, Mold, Bacteria, Industrial Hygiene, Metals, Allergens, PCR-Polymerase Chain Reaction (DNA), Silica, Volatiles Scan, Formaldehyde by HPLC, Water and Materials Testing.



[www.latesting.com](http://www.latesting.com)