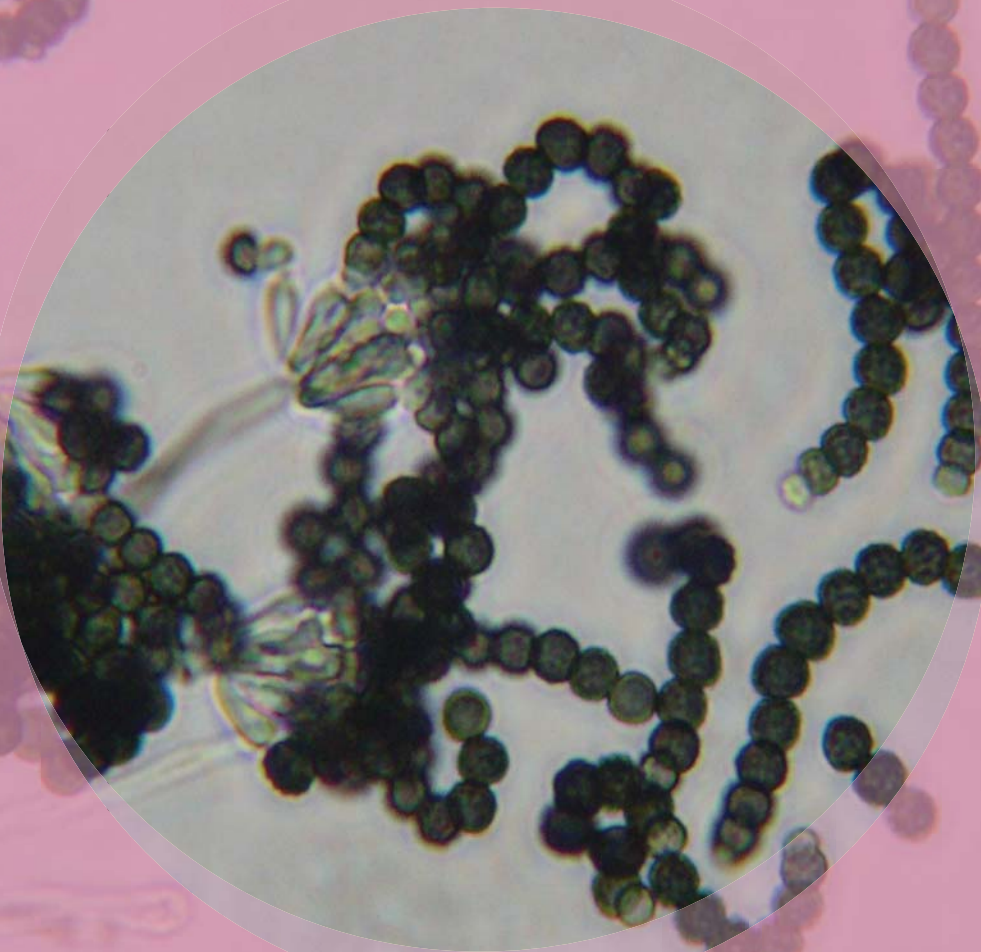


Memnoniella



Natural Habitats *Plant materials • Soil*

Suitable Substrates in the Indoor Environment

Paper • Sheetrock • Wood

Water Activity *Suspected to be above 0.90 Aw*

Mode of Dissemination *Wind*

Allergenic Potential *Unknown*

Potential Opportunist or Pathogen *Unknown*

Potential Toxins Produced *Dechlorogriseofulvin*

Epidechlorogriseofulvin • Griseofulvins • Memnopeptide A

Trichodermol • Trichodermin.

Other Comments *Griseofulvin used as an anti-dermatophyte drug and is commercially available.*

LAB SERVICES: Asbestos, Mold, Bacteria, Industrial Hygiene, Metals, Allergens, PCR-Polymerase Chain Reaction (DNA), Silica, Volatiles Scan, Formaldehyde by HPLC, Water and Materials Testing.



www.latesting.com

159 PASADENA AVE, SOUTH PASADENA, CA 91030 TEL: 800.303.0047