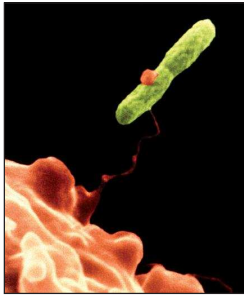


Legionella Inspections



There are over 40 species of the gram-negative bacteria known as *Legionella*. They can be found in groundwater, surface water and potable water worldwide. *Legionella pneumophila* is the primary

species that can cause potentially deadly pneumonia although other species also can cause Legionnaires' Disease. Routine risk assessments are a small price to pay to protect people from the deadly form of pneumonia caused by this microorganism.

The disease caused by *Legionella* is known as Legionellosis and can manifest itself as Legionnaires' Disease (a severe form of pneumonia) or Pontiac Fever. *Legionella* can be transmitted directly from the environment to humans. The primary routes of exposure are inhaling or aspirating aerosolized water contaminated with the bacteria.

The general population is fairly resistant to infection from *Legionella*. However, certain groups are at a much greater risk of infection. These groups include premature neonates, men over 55, heavy smokers, immuno-compromised individuals, transplant patients and people with other chronic health conditions like diabetes.

The various Federal agencies have established a Maximum Contamination Level Goal (MCLG) of non-detectable levels of the bacteria.

*Properly Performed
Legionella Investigations
Protect People & Investments*



Testing Laboratory ♦ Products ♦ Training



Los Alamitos, CA
1-800-755-1794

South Pasadena, CA
1-800-303-0047

www.LATesting.com

Local Services Provided by:

LA Testing

Legionella



www.LATesting.com
info@LATesting.com

Testing Laboratory ♦ Products ♦ Training

Legionella

Legionella was first discovered in 1976 at a convention of the American Legion after a number of people attending the event became ill. The organisms are known to contaminate various water systems in both private homes and in commercial buildings. The bacteria have also been found in whirlpools, cooling towers and evaporative condensers.



It is not uncommon, when conditions are ideal for Legionella, for outbreaks to occur. Due to the nature of the organism and where it can be found the potential for many people to be infected is a real threat. According to the CDC at least 8,000 to 18,000 people are hospitalized in the U.S. due to infection from Legionella each year, but it is also believed that there may be many additional cases that are undiagnosed and unreported.

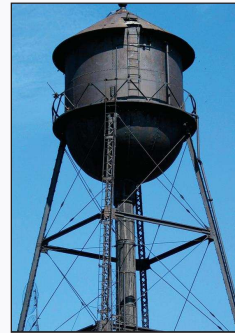
The health effects associated with infection from Legionella are often characterized by pneumonia, fever, chills, headaches and muscle pains. Early diagnosis and treatment of infected individuals is critical to prevent serious illness and the possibility of death.

The presence of Legionella is impossible to determine without performing certain scientific evaluations. Affordable testing procedures are available by qualified professionals and specialized laboratories to determine if Legionella is present.

Hiring a Legionella Inspector

Hire only a consultant qualified to perform Legionella risk assessments. These risk assessments are very complex and should only be conducted by qualified and experienced professionals.

When taking samples it is important to take swab samples of biofilm in addition to water samples. Biofilm is the “slime” that is found inside faucets and behind showerheads.



In whirlpool spas, this biofilm is often found along the sides of the tub or in the sand filter. Be sure to verify that any samples that are taken are to be analyzed by an experienced, independent environmental microbiology lab such as LA Testing.



Resources

American Indoor Air Quality Council
www.iaqcouncil.org

Association of Water Technologies
www.awt.org/Legionella03.pdf

California Indoor Air Quality Program
www.cal-iaq.org

Centers for Disease Control & Prevention
www.cdc.gov/ncidod/dbmd/diseaseinfo/legionellosis_g.htm

EMSL Analytical, Inc. www.emsl.com

Indoor Air Quality Association www.iaqa.org

LA Testing www.LATesting.com

Occupational Safety & Health Administration
www.osha.gov/dts/osta/otm/legionnaires/disease_rec.html
www.osha.gov/dts/osta/otm/otm_iii/otm_iii_7.html

U.S. Environmental Protection Agency
www.epa.gov/waterscience/criteria/humanhealth/microbial/legionella.pdf

FREE LEGIONELLA POSTER FROM LA TESTING



www.LATesting.com