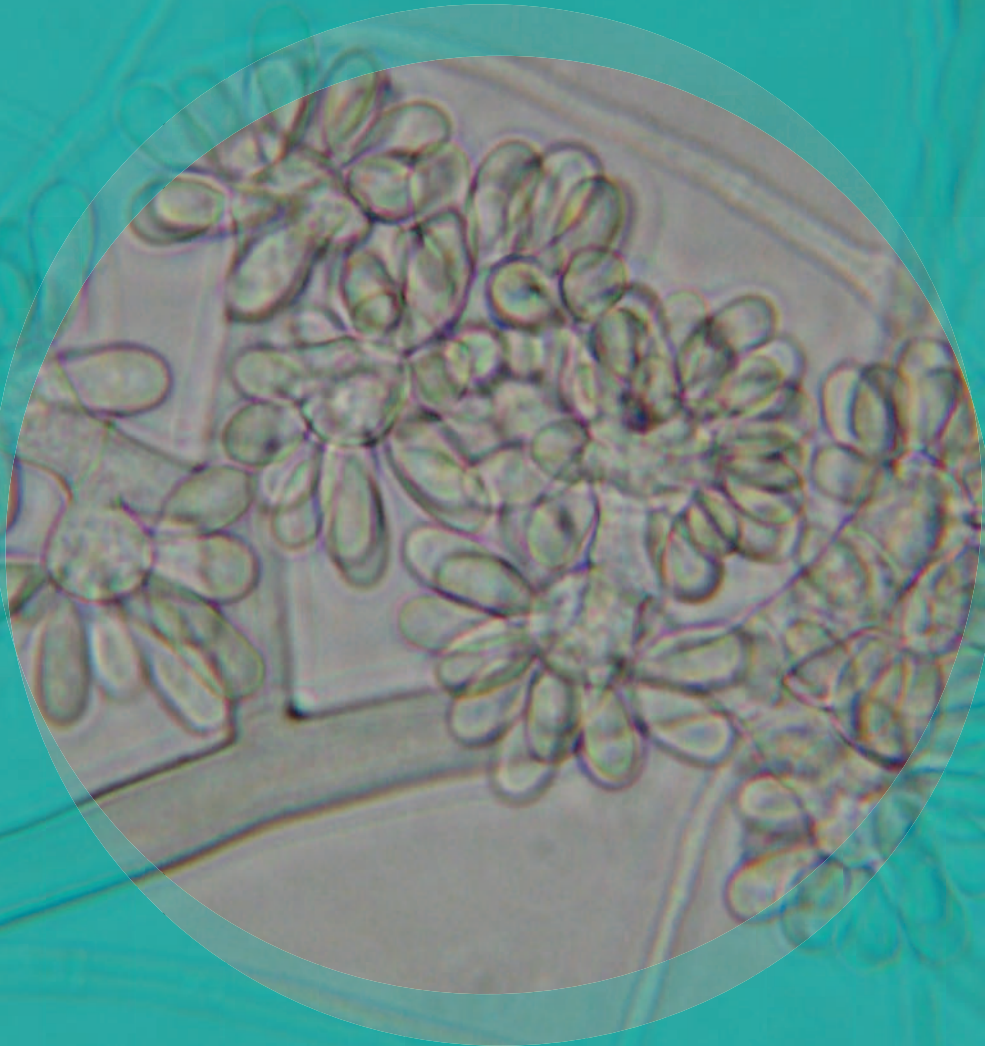


Botrytis



Natural Habitats *Plant pathogen responsible for causing gray mold (B. cinerea) on grapes, strawberries, raspberries, blackberries, low bush blueberries, lettuce, cabbage, and onions*

Suitable Substrates in the Indoor Environment

Houseplants • Fruits • Vegetables

Water Activity *Unknown*

Mode of Dissemination *Wind*

Allergenic Potential *Type I (asthma and hay fever)*

Potential Opportunist or Pathogen *Hyalohyphomycosis*

Industrial Uses *Biocontrol agent of insects*

Potential Toxins Produced *Unknown*

LAB SERVICES: Asbestos, Mold, Bacteria, Industrial Hygiene, Metals, Allergens, PCR-Polymerase Chain Reaction (DNA), Silica, Volatiles Scan, Formaldehyde by HPLC, Water and Materials Testing.



www.lateesting.com