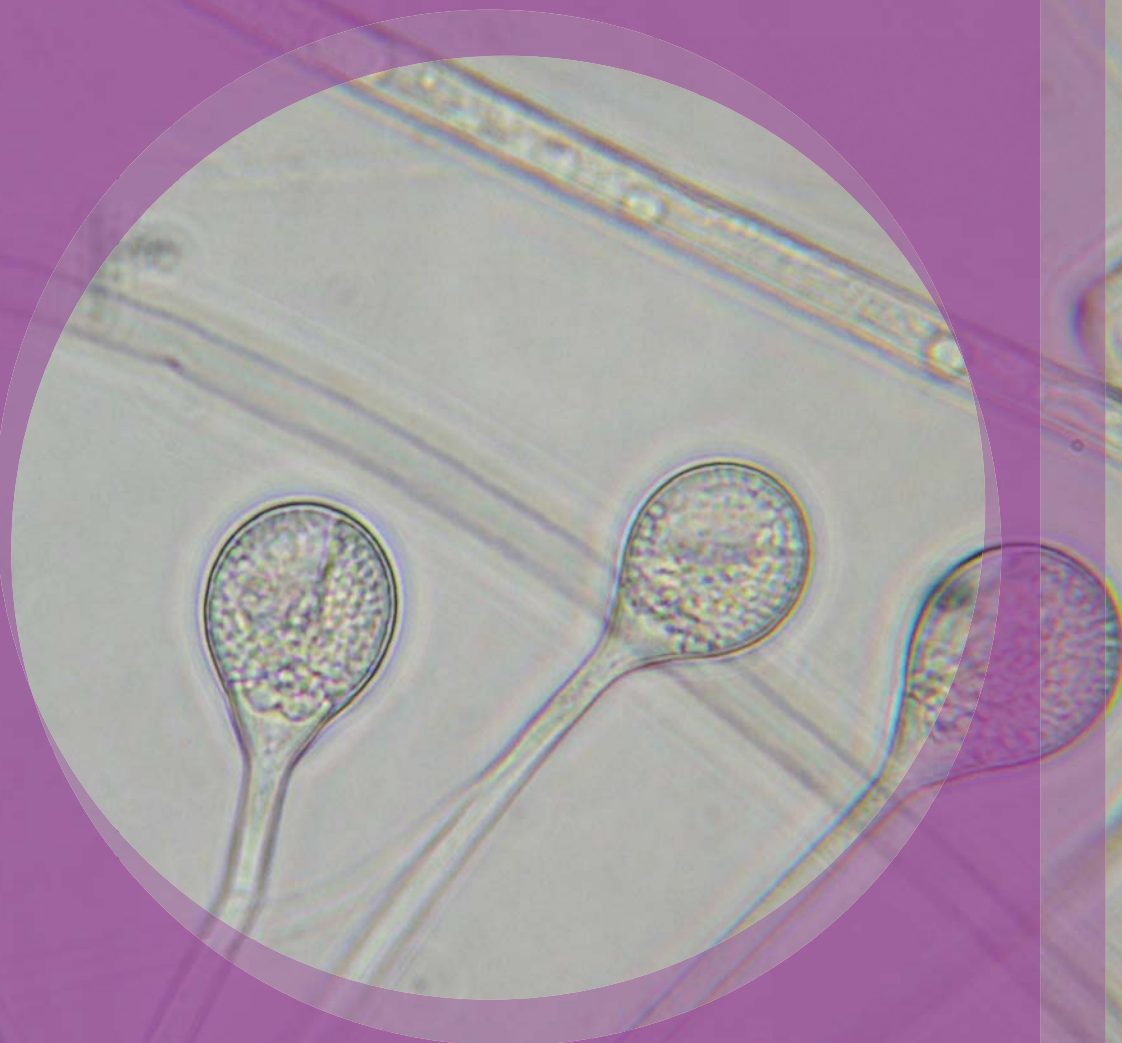


# Absidia



**Natural Habitats** *Soil • Decaying vegetation*

**Suitable Substrates in the Indoor Environment**

*Often found in stored grains • Other foods*

**Water Activity** *Unknown*

**Mode of Dissemination** *Wind*

**Allergenic Potential** *Recognized as an allergen*

**Potential Opportunist or Pathogen** *In immunocompromised patients pulmonary invasions, the meninges (brain or spinal chord), and kidney infections can result from Absidia exposure • Absidia may also cause zygomycosis in immunocompromised patients (AIDS)*

**Industrial Uses** *Unknown*

**Potential Toxins Produced** *Unknown*

**Other Comments** *Absidia often causes food spoilage*

**LAB SERVICES:** Asbestos, Mold, Bacteria, Industrial Hygiene, Metals, Allergens, PCR-Polymerase Chain Reaction (DNA), Silica, Volatiles Scan, Formaldehyde by HPLC, Water and Materials Testing.



[www.latestesting.com](http://www.latestesting.com)

159 PASADENA AVE, SOUTH PASADENA, CA 91030 TEL: 800.303.0047